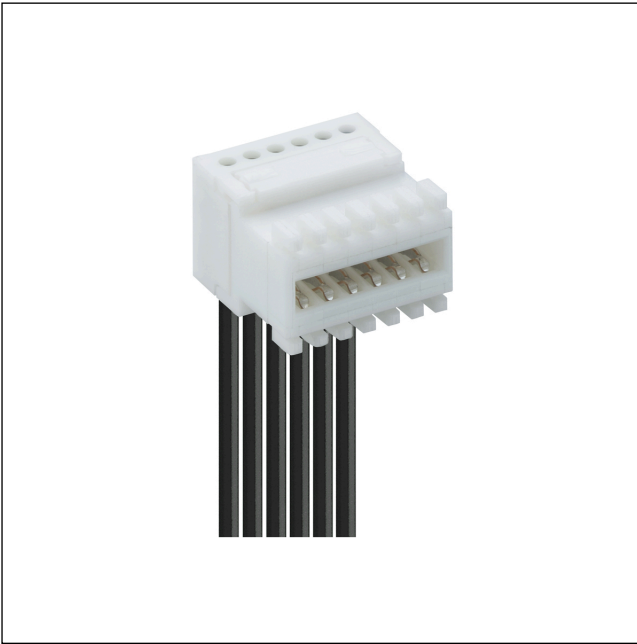


33

331000

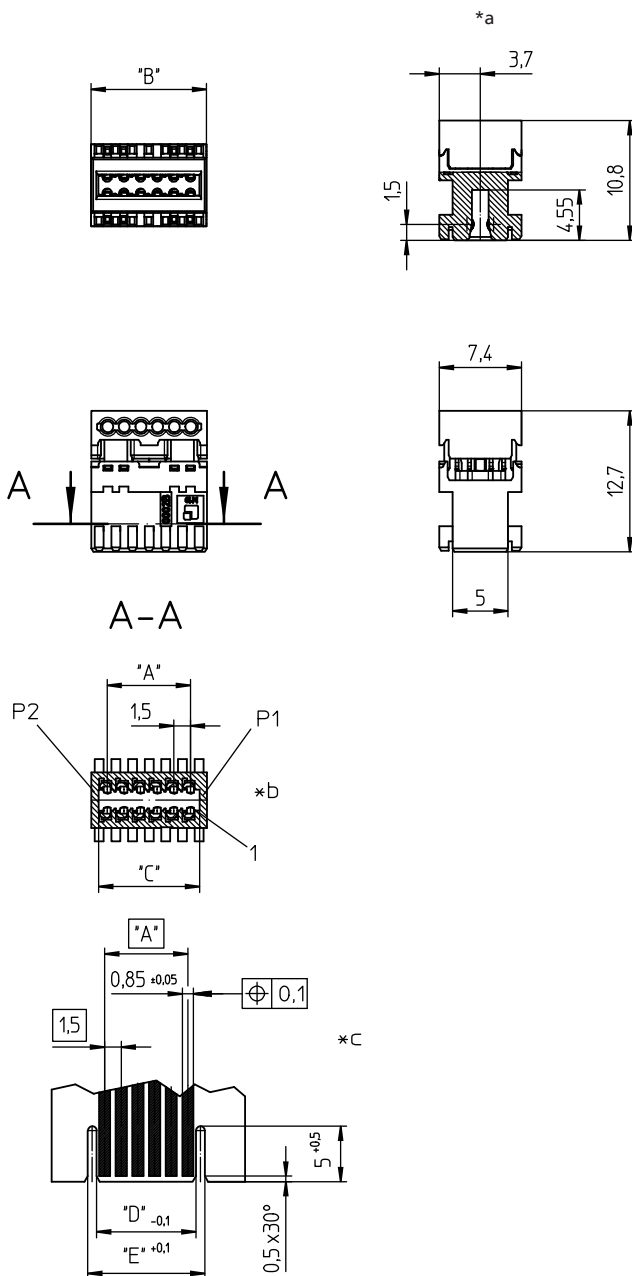
RAST 1.5 connectors, pitch 1.5 mm



RAST 1.5 connector for direct mating, insulation displacement technology (IDT), alternatively with or without closed sides

Approvals:





- *a terminated connector
- *b P1, P2 = positioning
- *c example for printed circuit board layout

Environmental conditions

Temperature range -40 °C/+130 °C¹
¹ upper limit temperature (insulating body) RTI (electrical) of the UL Yellow Card

Materials


Insulating body PA GF, V-0 according to UL94¹
 Contact spring CuSn, tin-plated

¹ material halogen-free and ATO-free, component glow wire resistant (GWEPT 750 °C), testing acc. to IEC 60695-2-11, assessment acc. to IEC 60335-1 (flame < 2 s)

Mechanical data

Mating with printed circuit board 1.5 ± 0.14 mm
 Insertion force/contact ≤ 2.0 N
 Withdrawal force/contact ≥ 0.3 N

Connectable conductors for IDT area

Construction discrete conductor
 Section min. 0.22 mm²
 Section max. 0.22 mm²
 Insulation diameter ≤ 1.2 mm
 Approved cables at www.lumberg.com 

Electrical data (at T_{amb} 20 °C)

Contact resistance ≤ 5 mΩ
 Rated current 3.0 A (T_{amb} 85 °C, VDE)
 3.0 A (ULus)
 2.3 A (cUL)
 Rated voltage 50 V
 Material group I (IEC)/0 (UL) (CTI ≥ 600)
 Creepage distance 0.6 mm
 Clearance 0.5 mm
 Insulation resistance > 1 GΩ

Associated products

| Designation | Pole Number | PU (Pieces) | MDQ (Pieces) | Dimensions | | | | |
|-------------|-------------|-------------|--------------|------------|--------|--------|--------|--------|
| | | | | A (mm) | B (mm) | C (mm) | D (mm) | E (mm) |
| 331000 02 | 2 | 990 | | 1.5 | 4.4 | 3.1 | 2.95 | 4.55 |
| 331000 03 | 3 | 738 | | 3.0 | 5.9 | 4.6 | 4.45 | 6.05 |
| 331000 04 | 4 | 588 | | 4.5 | 7.4 | 6.1 | 5.95 | 7.55 |
| 331000 05 | 5 | 492 | | 6.0 | 8.9 | 7.6 | 7.45 | 9.05 |
| 331000 06 | 6 | 420 | | 7.5 | 10.4 | 9.1 | 8.95 | 10.55 |
| 331000 07 | 7 | 366 | | 9.0 | 11.9 | 10.6 | 10.45 | 12.05 |
| 331000 08 | 8 | 324 | | 10.5 | 13.4 | 12.1 | 11.95 | 13.55 |
| 331000 09 | 9 | 288 | | 12.0 | 14.9 | 13.6 | 13.45 | 15.05 |
| 331000 10 | 10 | 264 | | 13.5 | 16.4 | 15.1 | 14.95 | 16.55 |
| 331000 11 | 11 | 240 | | 15.0 | 17.9 | 16.6 | 16.45 | 18.05 |
| 331000 12 | 12 | 222 | | 16.5 | 19.4 | 18.1 | 17.95 | 19.55 |

Packaging:
in a multiple bar magazine